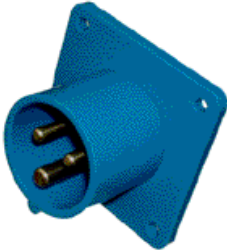




IEC-60309 PLUGS, CONNECTORS & WALL SOCKETS

16A/250-400V 3-5 POLES



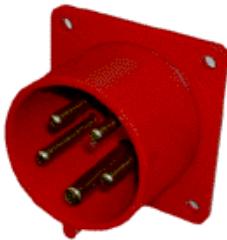
IEC 60309 PANEL MOUNT INLET

P/N: YL-000-016-3
16A/250V 2P + E
P/N: YN-000-032-3
32A/250V 2P + E
Color: Blue
Approvals: IEC, VDE, SEV,
CEE, OVE,
SEMKO
IP 44 (Splash-proof)
Conforms to CE Directives



IEC 60309 PANEL MOUNT OUTLET

P/N: ZL-000-016-3
16A/250V 2P + E
P/N: ZN-000-032-3
32A/250V 2P + E
Color: Blue
Approvals: IEC, VDE, CEBC,
KEMA, CEE, OVE,
SEV, FIMKO
IP 44 (Splash-proof)
Conforms to CE Directives



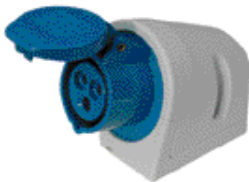
IEC 60309 PANEL MOUNT INLET

P/N: YM-000-016-5
16A/400V 3P + N + E
P/N: YO-000-032-5
32A/400V 3P + N + E
Color: Red
Approvals: IEC, VDE, SEV,
CEE, OVE,
SEMKO
IP 44 (Splash-proof)
Conforms to CE Directives



IEC 60309 PANEL MOUNT OUTLET

P/N: ZM-000-016-5
16A/400V 3P + N + E
P/N: ZO-000-032-5
32A/400V 3P + N + E
Color: Red
Approvals: IEC, VDE, CEBC,
KEMA, CEE, OVE,
SEV, FIMKO
IP 44 (Splash-proof)
Conforms to CE Directives



IEC 60309 WALL SOCKET

P/N: ZT-000-016-3
16A/250V 3P + N + E
P/N: ZU-000-032-3
32A/250V 3P + N + E
Color: Blue
Approvals: IEC, VDE, SEV,
CEE, OVE
IP 44 (Splash-proof)
Conforms to CE Directives



IEC 60309 WALL SOCKET

P/N: ZV-000-016-5
16A/400V 3P + N + E
P/N: ZW-000-032-5
32A/400V 3P + N + E
Color: Red
Approvals: IEC, VDE, SEV,
CEE, OVE
IP 44 (Splash-proof)
Conforms to CE Directives