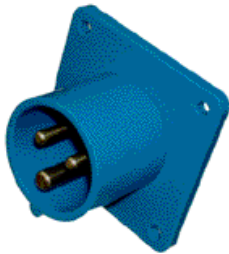




IEC-60309 PLUGS, CONNECTORS & WALL SOCKETS

16A/250-400V 3-5 POLES



IEC 60309 PANEL MOUNT INLET

P/N: YL-000-016-3

16A/250V 2P + E

P/N: YN-000-032-3

32A/250V 2P + E

Color: Blue

Approvals: IEC, VDE, SEV,
CEE, OVE,
SEMKO

IP 44 (Splash-proof)

Conforms to CE Directives



IEC 60309 PANEL MOUNT OUTLET

P/N: ZL-000-016-3

16A/250V 2P + E

P/N: ZN-000-032-3

32A/250V 2P + E

Color: Blue

Approvals: IEC, VDE, CEBC,
KEMA, CEE, OVE,
SEV, FIMKO

IP 44 (Splash-proof)

Conforms to CE Directives



IEC 60309 PANEL MOUNT INLET

P/N: YM-000-016-5

16A/400V 3P + N + E

P/N: YO-000-032-5

32A/400V 3P + N + E

Color: Red

Approvals: IEC, VDE, SEV,
CEE, OVE,
SEMKO

IP 44 (Splash-proof)

Conforms to CE Directives



IEC 60309 PANEL MOUNT OUTLET

P/N: ZM-000-016-5

16A/400V 3P + N + E

P/N: ZO-000-032-5

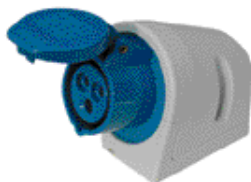
32A/400V 3P + N + E

Color: Red

Approvals: IEC, VDE, CEBC,
KEMA, CEE, OVE,
SEV, FIMKO

IP 44 (Splash-proof)

Conforms to CE Directives



IEC 60309 WALL SOCKET

P/N: ZT-000-016-3

16A/250V 3P + N + E

P/N: ZU-000-032-3

32A/250V 3P + N + E

Color: Blue

Approvals: IEC, VDE, SEV,
CEE, OVE

IP 44 (Splash-proof)

Conforms to CE Directives



IEC 60309 WALL SOCKET

P/N: ZV-000-016-5

16A/400V 3P + N + E

P/N: ZW-000-032-5

32A/400V 3P + N + E

Color: Red

Approvals: IEC, VDE, SEV,
CEE, OVE

IP 44 (Splash-proof)

Conforms to CE Directives